



Healthy Youth and Schools Commission

May Quarterly Meeting

May 19, 2021 | Jeff Travers, Chairman of the Commission



Welcome

Agenda

- Welcome and Introductions
- Acknowledgment
- Recap of the Previous Commission Meeting
 - Approval of Minutes
- Planning for the 2021-22 School Year
- Equitable Food Access Program
- Updates from OSSE
- Comments from Commissioners on Current Work and Strategic Plan Updates
- Closeout and Priorities for Next Meeting



Acknowledgment

*Thank you to William Dietz and
Beverley Wheeler for your years
of service on the Healthy Youth
and Schools Commission!*



Recap Previous Commission Meeting

Jeff Travers, Chairman, Healthy Youth and Schools Commission

Recap Previous Commission Meeting

- February Quarterly Meeting
 - Date: Wednesday, Feb. 17, 2021
 - Main topics covered:
 - Charter School Operations
 - Coronavirus (COVID-19) Testing in Schools
 - Approval of minutes



Planning for the 2021-22 School Year



Education Landscape

Dr. Heidi Schumacher, Assistant Superintendent of Health and Wellness, OSSE

Education Landscape for the 2021-22 School Year

Mayor Muriel Bowser announced at the April 12 situational update that **all public schools will fully open for in-person learning, five days a week**, with all educators back in the classroom.

Priorities for Planning

To support LEAs in preparing for students to return to the school building, OSSE has identified three priorities for LEAs to focus on when planning for fall 2021:

- **Safe Reopening:** Ensure a safe reopening of school buildings for all students and staff
- **Student & Staff Well-Being:** Support the social-emotional and mental health of our school communities
- **Accelerated Learning:** Assess the impact of interrupted instruction and accelerate learning, at home and in person, for all students

Expectations for LEAs

Beginning this spring and throughout the summer, LEAs will complete the following to prepare for the 2021-22 school year:

- **Federal Grant Applications** to receive emergency funds to support schools in the three priorities.
- **New Continuous Education Plans** to support LEAs in developing comprehensive plans for the fall and to build a shared understanding of what this will look like across the District
- **Interim Assessment Information** to better understand the ways in which students are being assessed and to obtain local information on the impact of interrupted instruction over the past year.

OSSE Supports

OSSE is taking the following steps this spring and summer:

- **Updating the Guiding Principles for Continuous Education** and re-orienting them around the three priorities.
 - The updated guiding principles will once again set clear expectations for what LEAs should be doing to ensure a safe reopening, support student and staff well-being, and accelerate learning for all students, especially students typically furthest from opportunity.
- **Offering targeted technical assistance** to help select LEAs develop their continuous education plans and align their various pots of local and federal funding to support them, as well as general support for all LEAs in completing strong plans.
- **Making available a portfolio of supports** from across the agency to support LEAs.
 - Will include new investments, such as making available consultative supports from external partners to inform the development continuous education plans, as well as expanding existing investments and curating existing resources.



Funding Opportunities

Linda Sun, Director of Federal Programs and Strategic Funding, OSSE



Elementary and Secondary School Emergency Relief (ESSER) Funds:

Updates on K-12 Recovery Funding

Linda Sun
Director of Federal Programs and Strategic Funding

May 19, 2021

Overview of ESSER Recovery Funding

- The United States Department of Education (USED) has issued three rounds of Elementary and Secondary School Emergency Relief (ESSER) funds.
- These funds may be used to support local education agency (LEA) efforts now, to plan for the start of the 2021-22 school year and to continue the work of recovery over the next few school years.

	Overall Award	LEA Subgrants (90%)	SEA Reservation (10%) Includes 0.5% for SEA administration
ESSER III-ARP	\$386,317,154	<u>\$347,685,439</u>	\$38,631,715
ESSER II-CRRSA	\$172,013,174	<u>\$154,811,857</u>	\$17,201,317
ESSER I-CARES	\$42,006,354	<u>\$37,805,719</u>	\$4,200,635

ESSER Recovery Funding – LEA Use of Funds

- **Broad allowable uses:** All activities allowable in Elementary and Secondary Education Act (ESEA), Individuals with Disabilities Education Act (IDEA), Adult Education and Family Literacy Act (AEFLA), Carl D. Perkins Career and Technical Education Act (Perkins), McKinney-Vento Homeless Assistance Act (MKV)
- **Focus on recovery and reopening** by safely reopening schools as expeditiously as possible this spring, sustaining the safe and healthy operation of school and addressing the significant academic, social, emotional and mental health needs of students
- **Address the many impacts of COVID-19 on students, including from interrupted instruction:** For ESSER-ARP, LEAs must spend at least 20 percent of funds to address learning loss through evidence-based interventions that address students' social, emotional and academic needs and address the disproportionate impact of coronavirus (COVID-19) on underrepresented student subgroups

Overview of DC LEA ESSER Grants

- Eligible LEAs are allocated ESSER funds based on the Title I-A formula

	LEA Subgrants (90%)	Application Status	Period of Availability*
ESSER III-ARP	<u>\$347,685,439</u>	Eligible LEAs will receive Grant Award Notice by May 24 and will complete second phase of application this summer	March 13, 2020-Sept. 30, 2024
ESSER II-CRRSA	<u>\$154,811,857</u>	Eligible LEAs are applying now	March 13, 2020-Sept. 30, 2023
ESSER I-CARES	<u>\$37,805,719</u>	All eligible LEAs have applied and received funding	March 13, 2020-Sept. 30, 2022

- Allowable uses, communications, and additional information on [OSSE recovery funding webpage](#)



*Includes 12-month Tydings period

ESSER Funds: SEA Reservation

- Each round of ESSER recovery funding includes 10 percent State education agency (SEA) Reservation to support emergency needs, response and recovery
- Most recent round (ESSER III-ARP) includes specific reservations for activities and interventions that respond to students' academic, social, and emotional needs and address the disproportionate impact of COVID-19 on underrepresented student subgroups

	Overall Award	SEA Reservation (10%) Includes 0.5% for SEA administration
ESSER III-ARP	\$386,317,154	\$38,631,715 – \$19,315,858 to address learning loss – \$3,863,172 for summer enrichment – \$3,863,172 for afterschool programs
ESSER II-CRRSA	\$172,013,174	\$17,201,317
ESSER I-CARES	\$42,006,354	\$4,200,635

Appendix



Additional Federal Recovery Funding

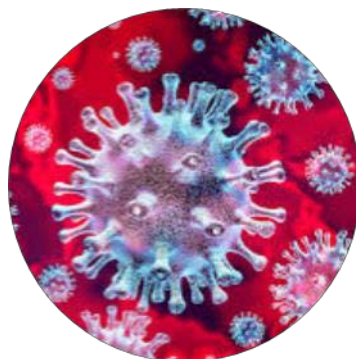
- Additional federal funding sources supporting LEAs and schools with emergency relief, and recovery and reopening managed by Systems and Supports, K-12

	DC Award <i>Amount received or expected</i>	General Purpose
Governor’s Emergency Education (GEER) Fund	GEER I: \$5,807,678 GEER II: \$2,415,567	Assistance to LEAs, institutions of higher education, or other education-related entities
IDEA supplement	\$5,426,006	Through ARP Congress authorized additional funding for IDEA Part B 611, 619, and Part C
American Rescue Plan (ARP) - Homeless	ARP Homeless I: \$632,646 ARP Homeless II: \$1,897,937	Additional state and LEA funding to support MKV grantees and the needs of students experiencing homelessness
Emergency Assistance to Non- Public Schools (EANS)	EANS I: \$5,312,618 EANS II: \$4,533,977	Emergency support for eligible non-public schools



COVID-19 Data and Guidance for Schools

Dr. Anil Mangla, DC Health



May Healthy Youth and Schools Commission Meeting

Emerging COVID-19 Trends in DC

Anil T. Mangla | May 19, 2021

OBJECTIVES

Understand the Current COVID -19 Trends in DC

PHASED REOPENING

RECOMMENDED PHASES

- **Phase 0**
 - Slow the spread
- **Phase 1**
 - Staggered reopening of select institutions and non-essential businesses with strict internal social distancing protocols.
 - Telework should continue, social gatherings limited, vulnerable populations protected.
- **Phase 2**
 - Reopening of select institutions (including schools) and non-essential businesses with moderate internal social distancing protocols.
 - Telework should continue, social gatherings limited, vulnerable populations protected.
- **Phase 3**
 - Fully reopen, while still encouraging limited social distancing measures for vulnerable populations and certain businesses.

Current Values (data through 5/08/21)

Level of Community Spread	Daily case rate	Rate of transmission	Test positivity rate	New cases from quarantined contacts
	6.6 (May 8) <small>7-day avg. per 100,000 pop.</small>	0.79 (Apr 28) <small>Effective reproduction number (R(t))</small>	3.2% (May 6) <small>Percent positive from RT-PCR tests</small>	15.3% (May 6) <small>7-day average</small>
Health System Capacity	Percent hospital utilization	Percent COVID-19 patients	Mean test turnaround time	Diagnostic tests conducted
	75.6% (May 8) <small>of available beds without surge</small>	5.3% (May 8) <small>of daily hospital census, 7-day average</small>	2.3 (May 8) <small>(days) 7-day average</small>	3,494 (May 6) <small>7-day avg. per million pop.</small>
Public Health System Capacity	Positive cases with contact attempt	Close contacts with contact attempt		
	98.1% (May 7) <small>7-day avg. attempt within 1 day</small>	99.8% (May 6) <small>7-day avg. attempt within 2 days</small>		
Community Engagement	Positive cases interviewed	Positive cases who provide close contacts	Mean number close contacts provided	Exposure Notification Opt-in
	64.7% (May 6) <small>7-day avg. completed within 3 days</small>	40.4% (May 6) <small>7-day avg.</small>	1.2 (May 6) <small>7-day avg. mean per positive case</small>	801,624 (May 5) <small>cumulative # of smart phones opted-in to official exposure notification system</small>
	Correct mask-wearing	Percent full COVID-19 vaccine coverage		
	74.0% (Mar 21) <small>percent observed Updated every 4 weeks.</small>	22.3% (Apr 30) <small>cumulative Updated weekly.</small>		

Data Source: DC Health

Criteria

Metrics to be met for 14 consecutive days at each level before gradually entering the corresponding phase. Potential dial-backs are evaluated in conjunction with other data to inform decisions to re-establish restrictions.

Daily case rate (7-day avg. per 100,000 population)
Rate of transmission (Effective reproduction number R(t))
Test positivity rate (Percent positive from RT-PCR tests)
New cases from quarantined contacts (7 day average)
Percent hospital utilization (of available beds, without surge)
Percent COVID-19 patients (of daily hospital census, 7-day average)
Mean test turnaround time (7-day average)
Positive cases with contact attempt (within 1 day, 7 day avg.)
Close contacts with contact attempt (within 2 days, 7 day avg.)
Positive cases interviewed (within 3 days, 7-day average)

Phase 3	Phase 2	Phase 0/1
Minimal community spread, sufficient health and public health capacity, and excellent community engagement.	Moderate community spread, moderate health and public health capacity, and fair community engagement.	Substantial community spread, insufficient health and public health capacity, and poor community engagement.
<5	5 - 15	>15
N/A*	0.8 - 1.2	>1.2
<3%	3% - 10%	>10%
>60%	5% - 60%	<5%
<80%	80% - 90%	>90%
<5%	5% - 10%	>10%
<2 days	2 - 3 days	>3 days
>90%	80% - 90%	<80%
>90%	80% - 90%	<80%
>80%	70% - 80%	<70%

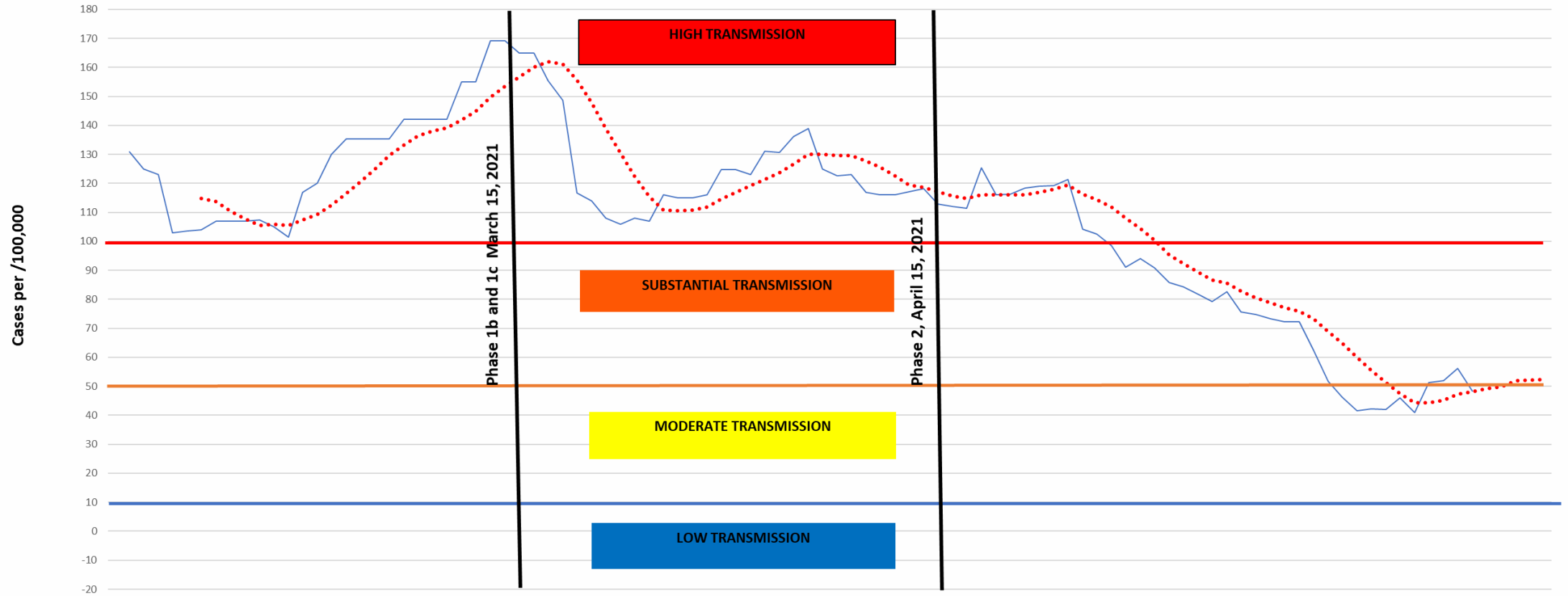
*Transmission rate becomes unreliable when daily case numbers are small

CDC Indicators and Thresholds for Community Transmission of COVID-19

Table 1. CDC Indicators and Thresholds for Community Transmission of COVID-19

Indicator	Low Transmission Blue	Moderate Transmission Yellow	Substantial Transmission Orange	High Transmission Red
Total new cases per 100,000 persons in the past 7 days ²	0-9	10-49	50-99	≥100
Percentage of NAATs that are positive during the past 7 days ³	<5.0%	5.0%-7.9%	8.0%-9.9%	≥10.0%

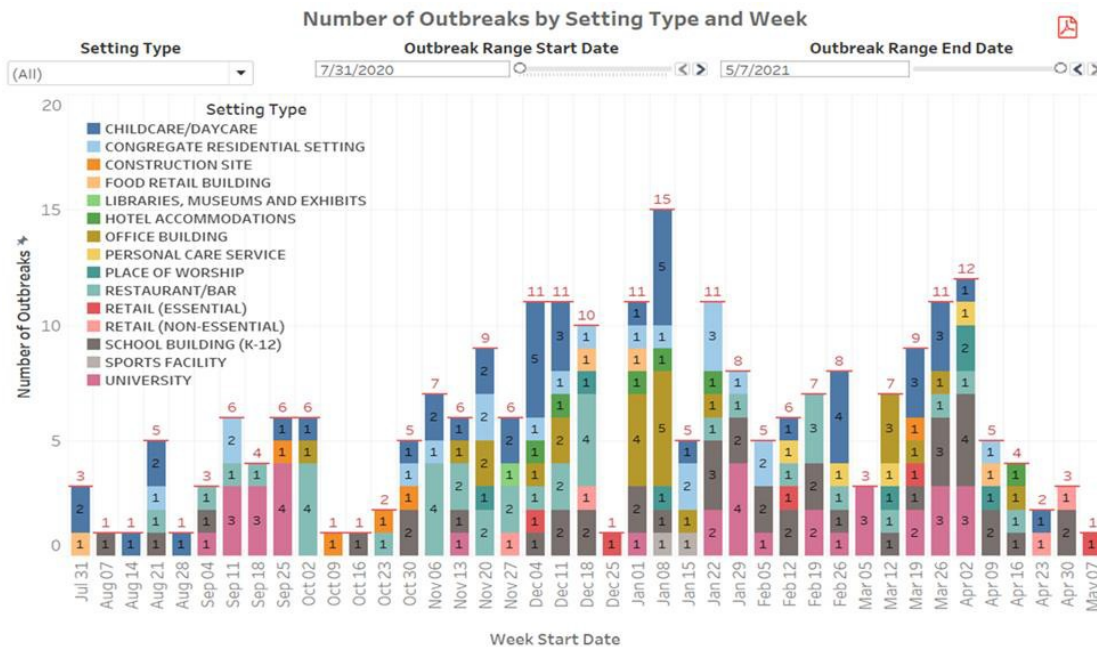
Weekly Case Rate Case / 100,000
DC Transmission Data February 15th, 2021 to May 18, 2021



Days Since K-12 CDC Indicator and Thresholds for Community Transmission Rate of COVID -19

OUTBREAK DATA

- Zero outbreaks in Childcare Centers and Schools
- Cumulatively, there were 239 outbreaks reported; the settings with the highest frequency of outbreaks are Childcare/Daycare Centers (44), **School Buildings (K-12) (41)**, Restaurants/Bars (37), and Universities (34). These account for 66% of all outbreaks reported
- Since 4/2/2021, there were 27 outbreaks reported; the settings with the highest frequency of outbreaks are **School Buildings (K-12) (9)**, Universities (3), and Places of Worship (3). These account for 56% of outbreaks reported in this time span



Outbreaks from Selected Settings in the District of Columbia between July 31, 2020 – May 12, 2021

Setting Type	Number of Outbreaks
CHILD CARE/DAYCARE	44
CONGREGATE RESIDENTIAL SETTING	21
CONSTRUCTION SITE	5
FOOD RETAIL BUILDING	4
HOTEL ACCOMMODATIONS	6
LIBRARIES, MUSEUMS AND EXHIBITS	1
OFFICE BUILDING	24
PERSONAL CARE SERVICE	4
PLACE OF WORSHIP	7
RESTAURANT/BAR	37
RETAIL (ESSENTIAL)	5
RETAIL (NON-ESSENTIAL)	4
SCHOOL BUILDING (K-12)	41
SPORTS FACILITY	2
UNIVERSITY	34

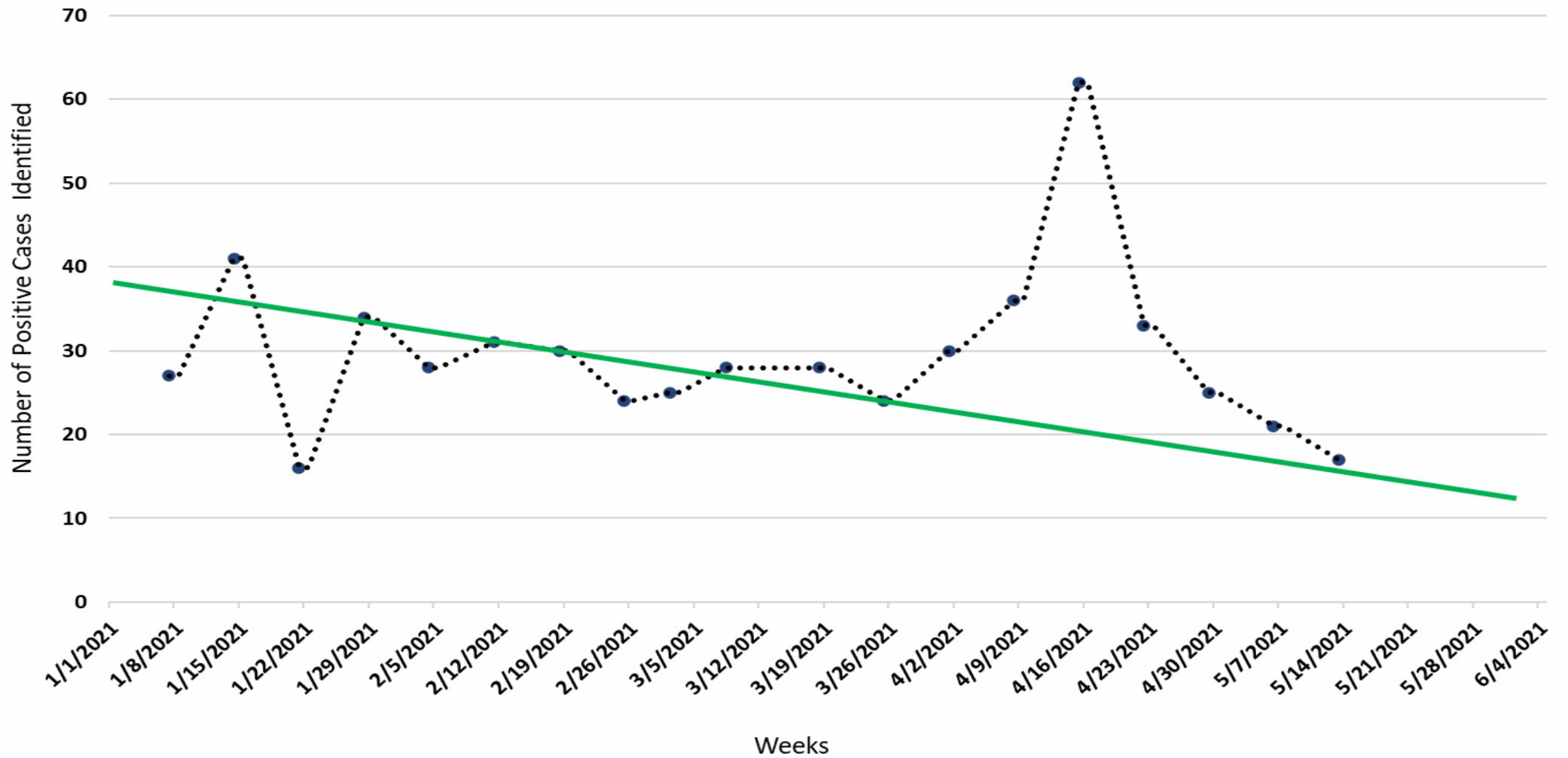
Data Source: DC Health (as of May 12, 2021)
 *These data do not reflect total outbreaks across all settings in DC.
 **Data subject to change due to ongoing investigations and data quality improvements. See the Data Guide for category definitions and detailed information.

Data Source: DC Health (as of May 12, 2021)
 *These data do not reflect total outbreaks across all settings in DC.
 **Data subject to change due to ongoing investigations and data quality improvements. See the Data Guide for category definitions and detailed information.

Outbreaks are defined by the following criteria:

- 1) Two or more laboratory-confirmed cases of COVID-19
- 2) Plausible epidemiological evidence of transmission is observed in a shared location other than a household

School Based Cases Reported to DCH From January 1, 2021 to May 10, 2021



DC | HEALTH

GOVERNMENT OF THE DISTRICT OF COLUMBIA

899 North Capitol Street NE, 5th Fl, Washington, DC 20002

 dchealth.dc.gov



@_DCHealth



dchealth



DC Health

For more information on the District's COVID-19 response, visit coronavirus.dc.gov



Health and Safety Reopening Plans

Dr. Heidi Schumacher, Assistant Superintendent of Health and Wellness, OSSE

Health and Safety Reopening Plans

- All LEAs and private, parochial and independent schools are required to submit a plan to OSSE that describes how they will safely reopen schools in accordance with the DC Health and OSSE health and safety guidance.
- OSSE will designate clear timelines and intervals for plan submission and ensure a complete review of reopening plans for all DC public and public charter LEAs and private, parochial and independent schools.
- As needed, individual plan reviews will include follow-up actions on areas of concern.
- Plans must be made publicly available at least 10 days prior to reopening



Addressing Physical Education Interrupted Learning

Charles Rominiyi, Health Education Manager, OSSE

HSAA Action Planning Process

- OSSE will develop an action plan submission platform
- Schools out of compliance after the 2021-22 school year will use action plan to navigate challenges and attest to meeting health and physical education minutes for the following school year
 - Submissions will occur during the summer before the 2022-23 school year
- Targeted technical assistance will be provided to schools out of compliance with health and physical education minutes

Other Resources and Supports

- Social and emotional learning will be essential for students.
- OSSE will develop high quality resources and supports to address social and emotional physical education instruction.
- Healthy Schools Grant to support Health, Physical Education and Physical Activity in schools
 - OSSE partnered with The Grassroot Project



Equitable Food Access Program

Jo-Ann Jolly, Program Manager, Nutrition and Physical Fitness
Bureau, DC Health

DC Health: Request for Applications 2021

Equitable Food Access Initiative Programs

Wednesday, May 19, 2021

DC HEALTH: Request for Applications Overview

Equitable Food Access Initiative Programs

- Healthy Corner Stores
 - [RFA Announcement](#)
- Home Delivered Meals
 - [RFA Announcement](#)
- School Based Nutrition Markets
 - [RFA Announcement](#)
- Produce Incentives
 - [RFA Announcement](#)

NOFA Release Date: April 16th, 2021

Request for Applications (RFA) Release Date: April 30, 2021

Application Deadline: June 4, 2021 (6:00 PM)

SCOPE OF SERVICES

- Applicants shall focus on the following Outcome Areas for implementation:
 - Healthy Food Access
 - Systems Alignment
 - Nutrition Education
 - Partnerships
 - Outreach, Promotion, and Marketing
 - Data Collection and Reporting

OUTCOME AREAS

- **Healthy Food Access**
 - A. Increased access to healthy foods for all District residents with low socio-economic status
 - B. Increased utilization of food access benefits by District residents
 - C. Improved food environments
- **Systems Alignment**
 - A. Increased referrals of participants into other local and federal nutrition/food access programs
- **Nutrition Education**
 - A. Improved nutritional literacy and food agency for District residents with low-socioeconomic status
- **Partnerships**
 - A. Increased partnerships and coordination between federal and local food access programs
- **Outreach, Promotion, Marketing**
 - A. Increased community engagement in local food access programs
- **Data Collection and Reporting**
 - A. Increased reported food security by District residents enrolled in the Equitable Food Access Programs

DC HEALTH: RFA Pre-Application Conference Information

■ Healthy Corner Stores

- Pre-Application Conference: Monday, May 3rd 1:30-3:00pm
- Eventbrite Link: [Healthy Corner Stores Registration](#)

■ School Based Nutrition Markets

- Pre-Application Conference: Wednesday, May 5th 2:00-3:30pm
- Eventbrite Link: [School Based Nutrition Markets Registration](#)

■ Home Delivered Meals

- Pre-Application Conference: Thursday, May 6th 3:00-4:30pm
- Eventbrite Link: [Home Delivered Meals Registration](#)

■ Produce Incentives

- Pre-Application Conference: Friday, May 7th 3:00-4:30pm
- Eventbrite Link: [Produce Incentives Registration](#)

CONTACT INFORMATION

Jo-Ann Jolly, MPH, RD

Program Manager

Nutrition and Physical Fitness Bureau

Community Health Administration

District of Columbia Department of
Health

899 North Capitol Street, NE

Washington, DC 20002

Email: joann.jolly@dc.gov

Karen Franco

Public Health Analyst

Nutrition and Physical Fitness Bureau

Community Health Administration

District of Columbia Department of
Health

899 North Capitol Street, NE

Washington, DC 20002

Email: karen.franco@dc.gov



General Updates from OSSE

Heidi Schumacher, Assistant Superintendent, OSSE

Nutrition Programs Updates

- The USDA has released school meals guidance for the 2021-22 school year which allows for free meals to be provided for all students.
- OSSE is gaining clarity on additional waivers and flexibilities and will be providing LEAs with updated guidance.



Commissioners' Current Work

Commissioners



Healthy Youth and Schools Commission Strategic Plan Update

Jeff Travers, Chairman, Healthy Youth and Schools
Commission



ACEs Working Group

Jeff Travers, Chairman, Healthy Youth and Schools
Commission



Nutrition Education and Meals Working Groups

Kristy McCarron, Commissioner, Healthy Youth and Schools Commission
Beverley Wheeler, Commissioner, Healthy Youth and Schools Commission



Data Working Group

Bill Dietz, Commissioner, Healthy Youth and Schools
Commission



Closeout and Priorities for Next Meeting

Jeff Travers, Chairman, Healthy Youth and Schools Commission