



Commemorative Works Committee

July 31, 2020



District of Columbia
Office of Planning

Agenda

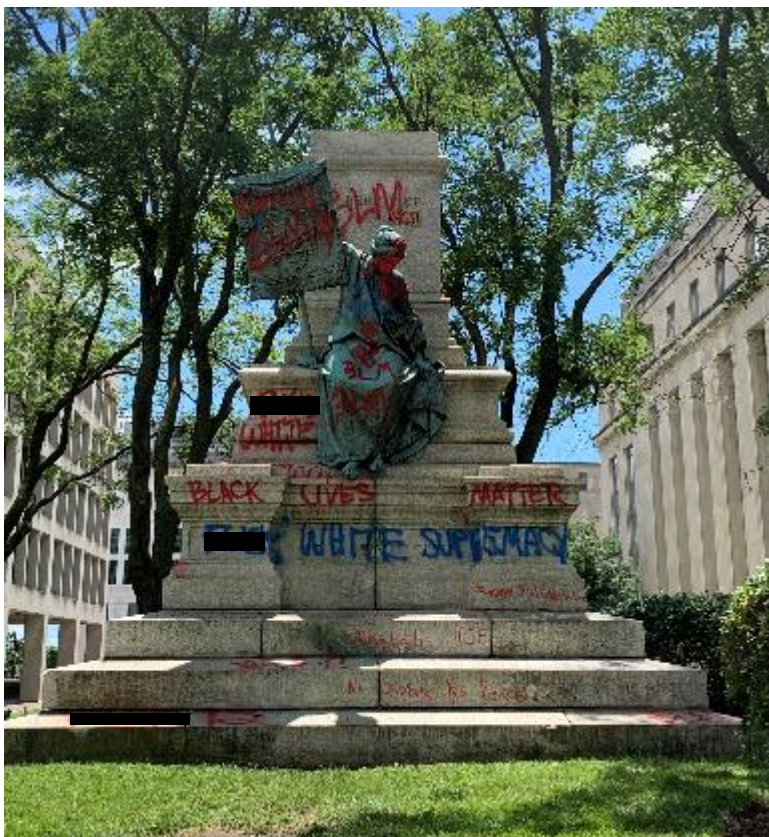
1. General Updates

- DC Council Discussions
- Mayor's DC FACES Task Force
- CWC Webpage

2. Work Program

- Location Strategy
- Vision SOW

UPDATE - Task Force on Facilities and Commemorative Expressions (DC FACES)



Albert Pike Memorial



Boone Elementary (Formerly Orr Elementary)

Mayor Bowser's Task Force on Facilities and Commemorative Expressions (DC FACES) is evaluating local commemorative works, streets names, and named public buildings and facilities to ensure they align with District of Columbia Values is timely in light of recent public events and discussions about who and what is commemorated.

DC FACES

Report of Recommendations to the Mayor by August 31st

Co-Chairs

Beverly Perry, Senior Advisor
Richard Reyes-Gavilan, Chief Librarian

Task Force Members

Malaika Abernathy Scriven, OP
Keith Anderson, DGS
Kim Bassett, Secretary of State
Ashley Emerson, MOAA
Lewis Ferebee, DCPS
Delano Hunter, DPR
Jeff Marootian, DDOT

Policy Team

Summarizing key policy, legislative and budgetary considerations and consolidating policy/process requirements for name changes, updates and revisions.

Engagement Team

Developing and finalizing engagement tools for community and stakeholder surveys, summarizing results and guiding recommendations for the final report.

Research Team

Developing process for completing asset inventory, analyzing assets, working with policy team on process and guiding final recommendations.



Park Facilities



Schools



Streets

CWC Webpage Update

The screenshot shows the DC Office of Planning website. At the top left is the DC.gov logo with the tagline 'mayor world leader'. A search bar is at the top center. Below the navigation menu, the 'Plans & Initiatives' section is highlighted with a red box, containing the text: 'Local Emergency: A local emergency is in effect for the District of Columbia. [Click here for more information.](#)' Below this, the 'Plans & Initiatives' section is expanded to show 'Commemorative Works Program'. The page content includes a description of the program, a list of 'We Want to Hear from You' (with links for various wards and areas), and 'For More Information' (with links to background, legislation, and the DC Public Art and Commemorative Expressions (DC-PACES) Working Group).

Phase One - Complete

1. Introduction

- a. Commemoration in DC
- b. Program Overview (PowerPoint Presentation)
- c. Full Application
- d. Commemoration Suggestion Form
- e. Contact Information
- f. Commemorative Works Amendment Act of 2000

Phase Two – Fall 2020

1. Current Work Program

- a. Kick-off Meeting Presentation (12.02.19 CWC mtg presentation)
- b. Visioning Presentation (03.27.20 CWC mtg presentation)
- c. Location Strategy/Commission Make-up/Webpage Update (07.31.20 CWC mtg presentation)

2. Additional Resources

- a. Legislation
- b. Other

3. Approved Commemorative Works (Description, Photo, Application)

- a. Carter G. Woodson
- b. Chuck Brown
- c. Metro Crash Memorial
- d. Marion Barry, Jr.

Location Strategy



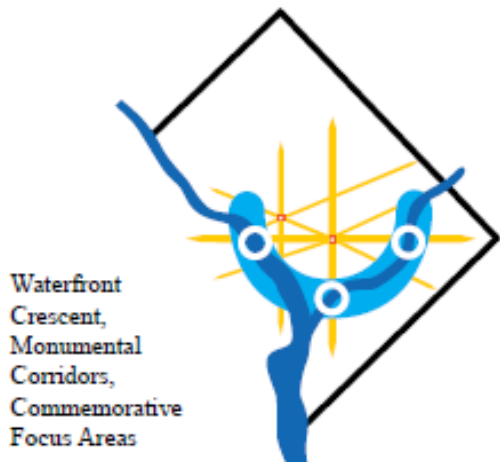
Why develop a location strategy?

1. Shifts the work of the CWC to something that is proactive.
2. Identifies potential sites for prospective applicants.
3. Guides commemorative works to locations that achieve broad District of Columbia goals:
 - Potential sites located in all Wards; and,
 - Preferred locations in areas identified as important community centers.

Location Strategy

BACKGROUND

Develop the District's First Location Strategy for Commemorative Works



Define Location Concepts

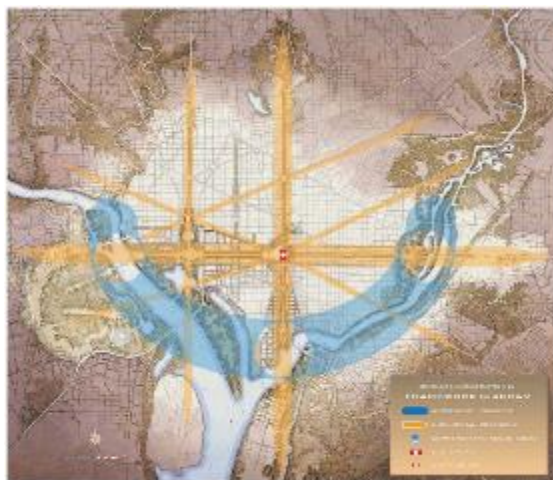
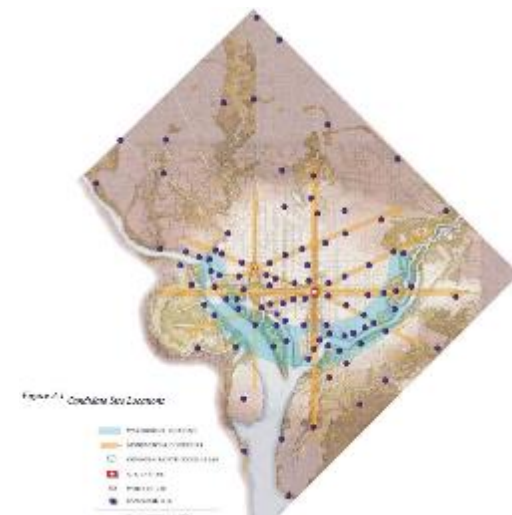


Figure 2.7 The Transition Diagram summarizes planning considerations for directing the location of future monuments throughout the District of Columbia.

Apply to City Plan



Identify Specific Sites

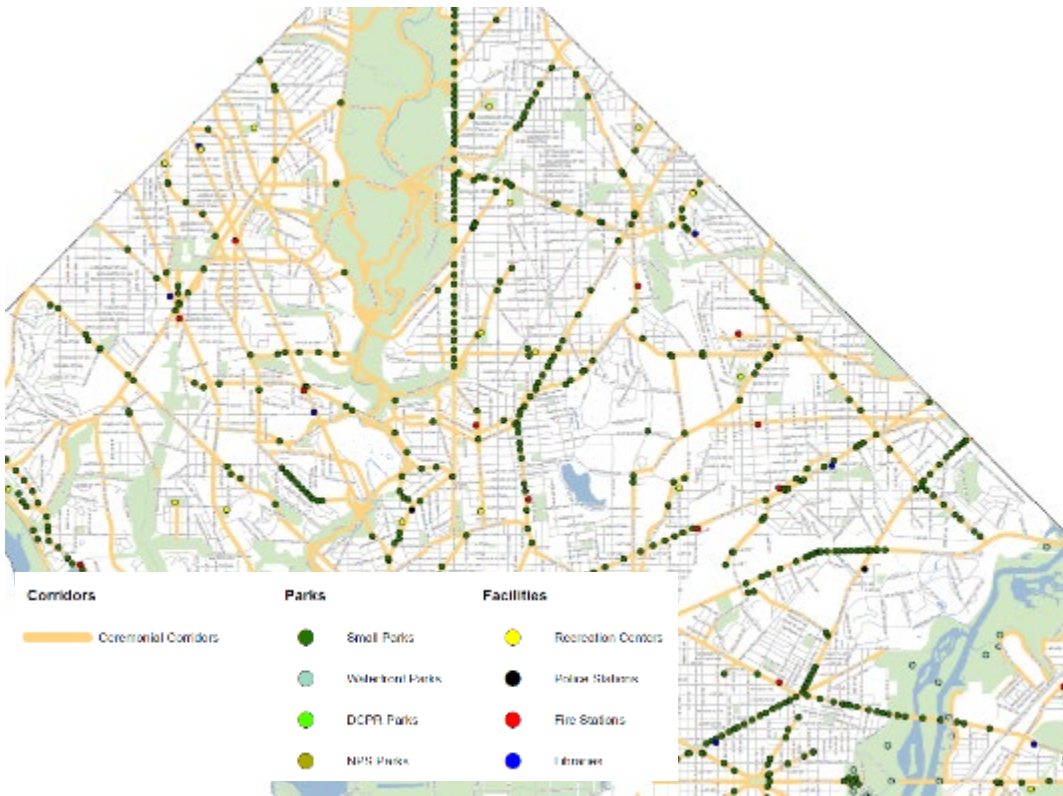
Three Concepts

1. Ceremonial Corridors
2. Community Spaces
3. Shared Spaces

Places in the City Plan

1. Small Parks and Open Spaces
2. Streets and Sidewalks
3. Civic Buildings and Spaces
4. Large Parks, Waterfronts, and Plazas

Ceremonial Corridors



1. Small Parks & Open Spaces	612
Triangle	212
Median	371
Circles	6
Other	23
2. Streets & Sidewalks	N/A
Wide sidewalks (20' or more)	
3. Civic Buildings & Spaces	69
Library	14
Police Station	7
Fire Station	19
Recreation Center	29
4. Large Parks, Waterfronts & Plazas	40
DPR Parks	12
Waterfront Parks	28
TOTAL SITES	721



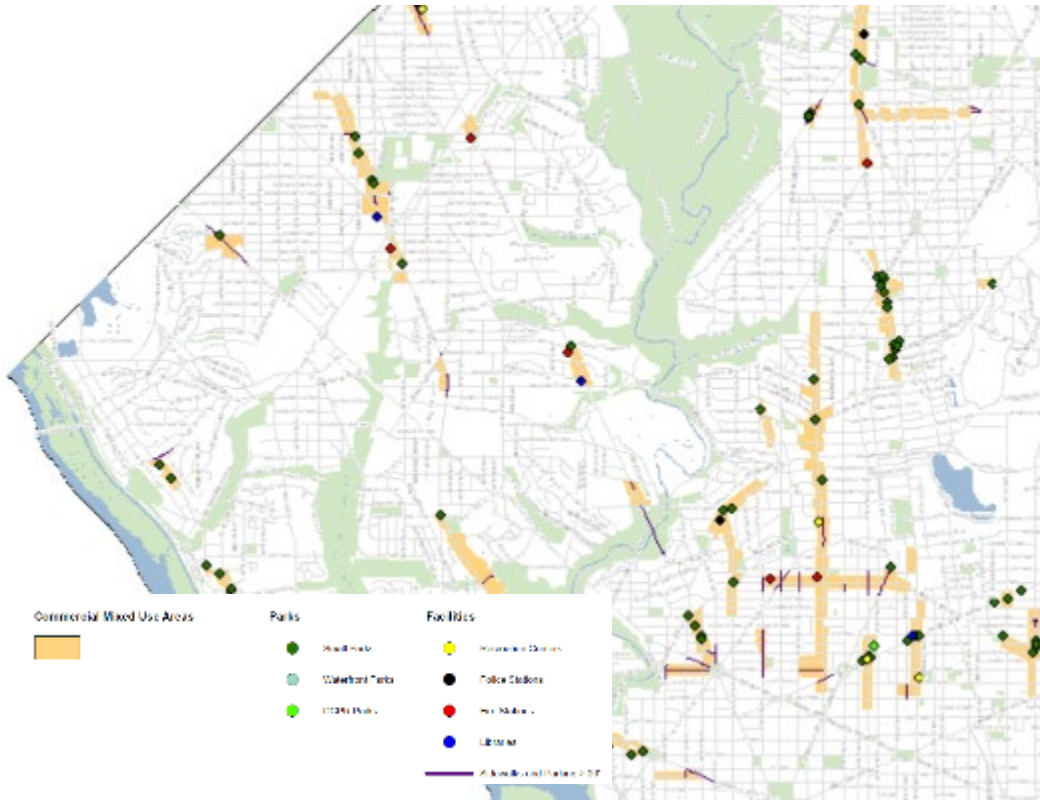
North Capitol Street and New Hampshire Avenue
Triangle Park



Rhode Island Avenue
Public Facility (Woodridge Library)

COMMUNITY SPACES – SITES

Community Spaces



1. Small Parks & Open Spaces **142**
 Triangle 65
 Median 70
 Other 7

2. Streets & Sidewalks **70+/-**
 Wide sidewalks (20' or more)

3. Civic Buildings & Spaces **27**
 Library 9
 Police Station 4
 Fire Station 10
 Recreation Center 4

4. Large Parks, Waterfronts & Plazas **3**
 DPR Parks 2
 Waterfront Parks 1

TOTAL SITES **242**

Congress Heights
 Triangle Park
 Fire Station
 Wide Sidewalk

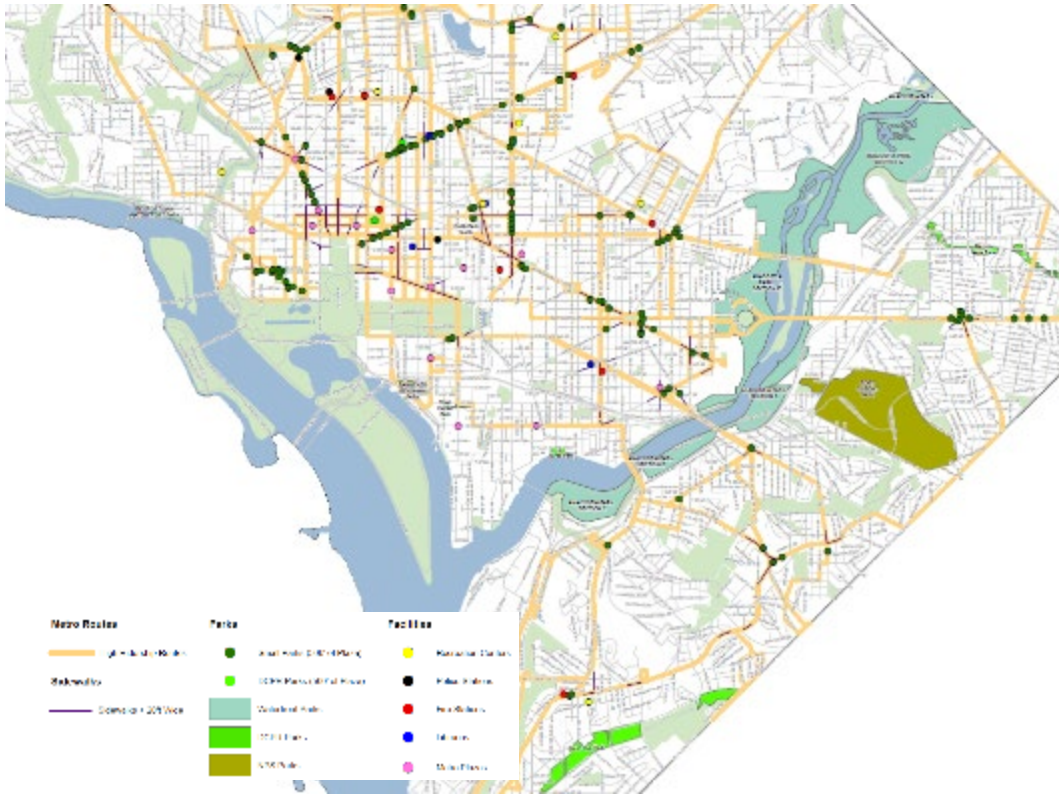


Petworth
 Triangle Park
 Library
 Wide Sidewalk



SHARED SPACED - SITES

Shared Spaces



1. Small Parks & Open Spaces	205
Triangle	89
Median	104
Other	12
2. Streets & Sidewalks	68+/-
Wide sidewalks (20' or more)	
3. Civic Buildings & Spaces	36
Library	9
Police Station	4
Fire Station	13
Recreation Center	10
4. Large Parks, Waterfronts & Plazas	2+/-
DPR Parks	2
Waterfront Parks	N/A
Metro Station Plazas	18
TOTAL SITES	348



Chevy Chase Community Center
Public Facility



Potomac Metro Station
Metro Plaza

SITE PROFILE - EXAMPLE

Massachusetts Avenue and Yuma Street NW

Site 13

Location:



Site Description Summary:

Occupying approximately 1,050 square feet of grassy flat land, this triangle park is located on Massachusetts Avenue and next to the historic Spring Valley Shopping Center. The site's location on a prominent corridor gives it high visibility and it's location next to a neighborhood shopping center and office buildings makes it a place of importance for the surrounding community. The space is surrounded by sidewalks and rounded concrete curb, includes a bus stop/shelter, and several landscaped beds

Commemorative Opportunity:

In the context of the Massachusetts Avenue, adjacent commercial uses, and single family homes, the site is suitable for a small to moderate size commemorative work viewed by passing vehicles and that serves as a local gathering space, like an interactive piece of playable art. The site is surrounded by a network of sidewalks making it easily accessible to pedestrians. The location of a bus stop on site also makes it accessible by mass transit.

Framework Context



Ceremonial Corridor



Community Space



Shared Space

Physical Characteristics:

Acres: .5

Configuration: Triangle

Overall Character: Grass

Terrain: Flat

Adjoining Uses: Residential, Parkland

Visual Quality:

Views: Neighborhood and Corridor

Vistas: Indirect

Existing Setting: Neighborhood Commercial

Potential Setting: No Change

Gateway Corridor: Yes

Urban Design Framework:

Prominence: City-wide

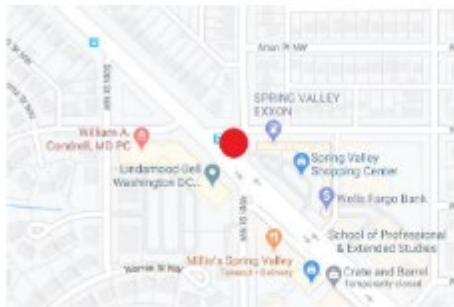
Concept: Corridor

Historic and Cultural Resources:

Historic District: No

Other: Spring Valley Shopping Center

Vicinity



Site Access:

Vehicular: Yes

MetroRail: No

MetroBus: Yes

Pedestrian: Yes

Parking: On Street

Site Image:



Profile

Ownership: DPR

ANC: 3D

Res. Number: 456

Park Name: N/A

DC Office of Planning

Discussion

1. How many preferred sites should the strategy identify?
 - Fewer sites per Ward with more information on each site? (ie. 10 sites per Ward)
 - More sites per Ward with less information on each site (ie. 20 sites per Ward)
2. What criteria should be used to identify preferred sites?
 - High visibility
 - Mature trees/shade
 - Good accessibility

Commemorative Works Visioning

Scope of Work

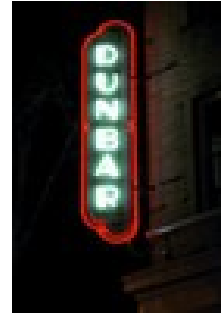
Purpose of the project: To develop a SOW for a commemoration strategy that affirms the District's civic identity; engages and solicits input from the public on subjects that should be commemorated; and, considers traditional, diverse and innovative ways to highlight community heritage.

Timeline/length of project: Four to six months (intermittent work between October 2020 to July 2021)

Study Area Boundaries: Citywide

Description of Analysis and Considerations: Staff review of best practices (New Orleans, Philadelphia, etc.); current discussions of historic commemorative works; budget/staff capacity; and, coordination within OP and EOM, District agencies, DC Council interest/legislation, and NCPC.

Listing of key milestones and deliverables: Summary of best practices/current events, draft SOW, review District agencies/partners, refinement/final draft SOW, presentation to CWC, and refinement/final SOW.



Discussion

1. With what other District initiatives should this work be coordinated?
2. What additional factors should be considered when developing the SOW?

Next Steps

August (TBD) Working Group Meeting

September 25 Committee Meeting

October (TBD) Working Group Meeting

November (TBD) Working Group Meeting

December 11 Committee Meeting