



Maryland
Department of
the Environment

Maryland's 2019-2021 PCB Source Trackdown Study

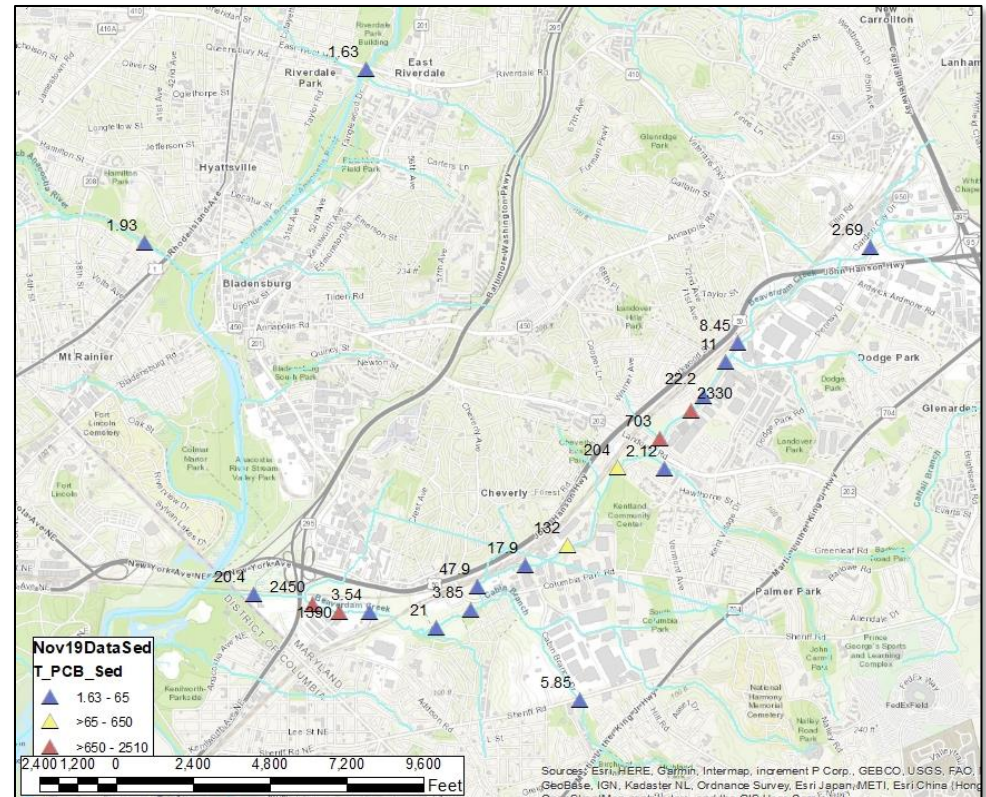
MDE WSA – Water and Science Administration
MDE LMA – Land and Materials Administration

Leadership Council for a Cleaner Anacostia River
September 9, 2021



Recent MDE activity along Lower Beaverdam Creek

- Work ongoing at Joseph Smith and Sons
- Work ongoing in Pennsy Drive area
- Fish sampling throughout Lower Beaverdam Creek (LBC) and tributaries in July
- Community Involvement
 - MDE gave presentation to the Cheverly Town council in July



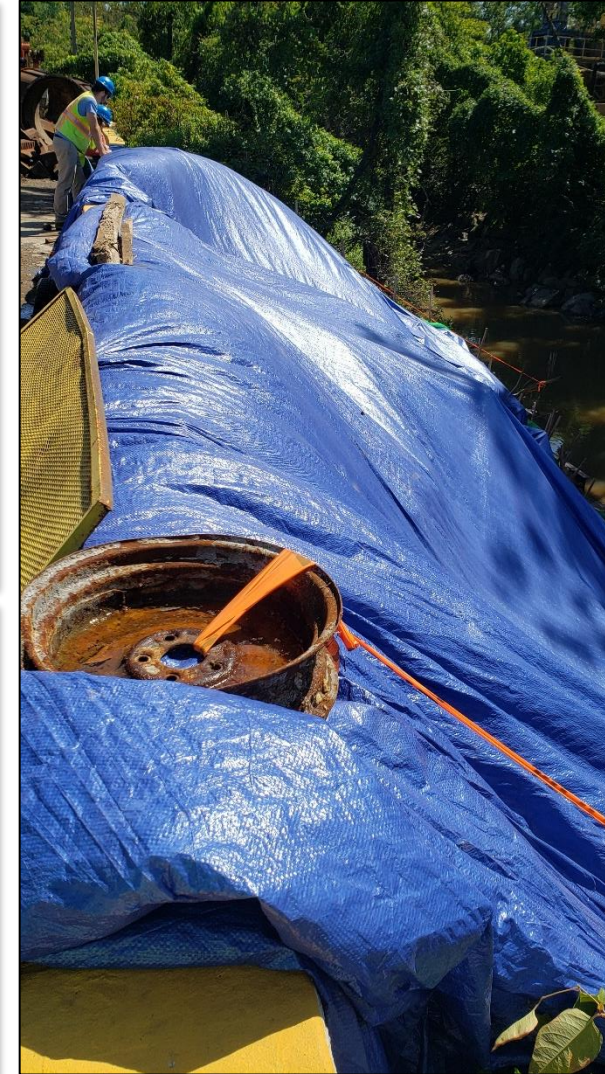


Joseph Smith and Sons: Update

Status of Near-Term

Goals for Soil Hot Spot:

- Evaluate temporary bank stabilization to minimize any erosion prior to removal ✓
- Additional characterization to delineate hot spot along bank
→ *UNDERWAY (samples at lab)*
- Evaluate potential remedial alternatives for polychlorinated biphenyl (PCB) hot spot area and permanent bank stabilization
→ *Pending Sampling results*
- Joint EPA & MDE effort





Joseph Smith and Sons: Update

Long Term Goals MDE and EPA:

- Work plan preparation underway for second round of detailed, multi-media site-wide characterization of property
- Anticipate additional actions which may include placement of control mechanisms for other media/areas of concern
- Continued improvement of site stormwater controls to ensure sediment and/or stormwater are not inadvertently carrying PCBs to LBC
- Efforts span MDE's Water and Science Administration and Land and Materials Administration

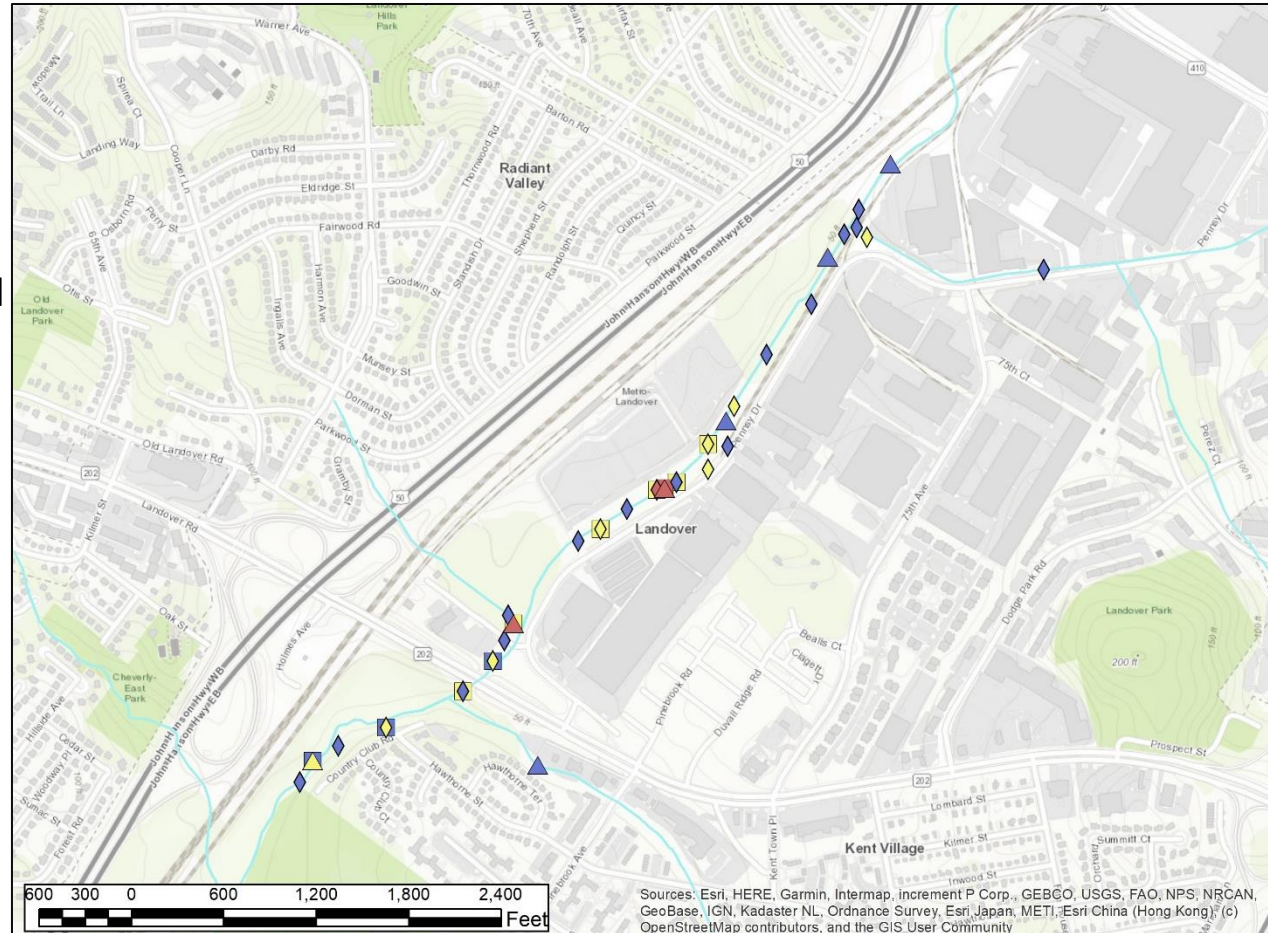




Penny Drive: Characterization on-going

- Automated samplers in outfalls of concern along Penny Drive
 - PCB analysis of stormwater
 - Storm events captured in April and June
 - Data suggest additional work within storm sewer system is needed
- Ongoing effort with Prince George's County to move into MS4 system and isolate potential source areas

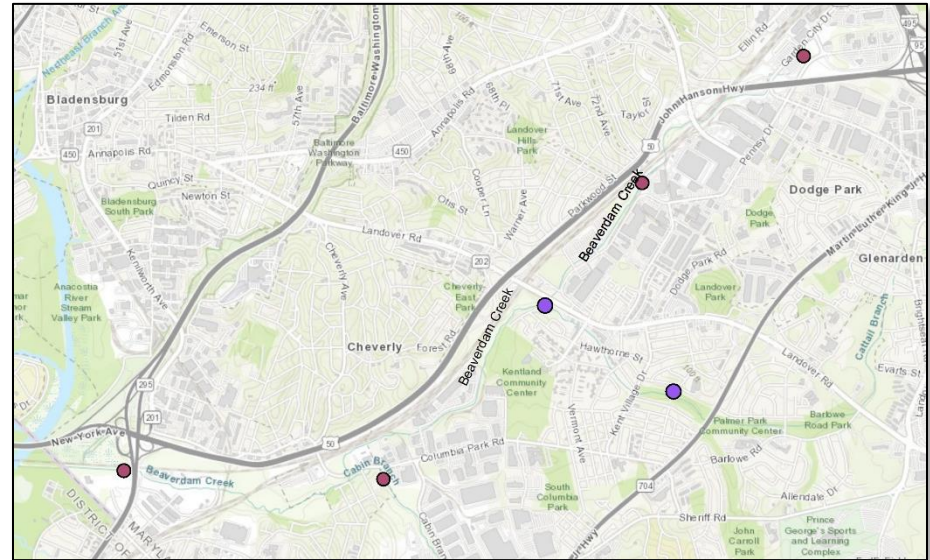
2019-2021 Sample Locations





Fish sampling throughout LBC

- Fish tissue sampling was conducted in July 2021.
- 3 locations within LBC, one location in Cabin Branch (tributary of LBC)
- Samples are at the lab, awaiting analysis
- 23 samples total, 4 different species
 - Banded killifish
 - Mummichog
 - Tessellated Darter
 - Sunfish
- Thank you to COG staff for field assistance!





Upcoming activities within LBC

- I-295/US-50 Interchange:
 - Continued PCB characterization efforts on and around Joseph Smith and Sons property to identify areas of concern
 - Continued on-site improvements of stormwater management in order to prevent potential PCBs from migrating offsite
 - Evaluation and remediation of known areas of elevated PCBs
- Pennsy Drive
 - Additional multimedia characterization further into MS4 system to track down potential sources
- Fish sampling
 - Analysis of results, plans for additional characterization in areas of concern based on results, and evaluation of long term reductions of PCBs within the system