

DEMOLITION

- BRICK FENCE PIER
- REMOVE
- REMOVE + DEMOLITION
- REMOVE OF EXISTING PLANTINGS

Legend:

- A. Demolition of pier
- B. Removed at existing fence to be adapted; see plan of new fence
- C. Demolition of statue base; statue + plaque, to be removed for reinstallation according to design project
- D. Removed existing plantings

"Bernardo de Gálvez"

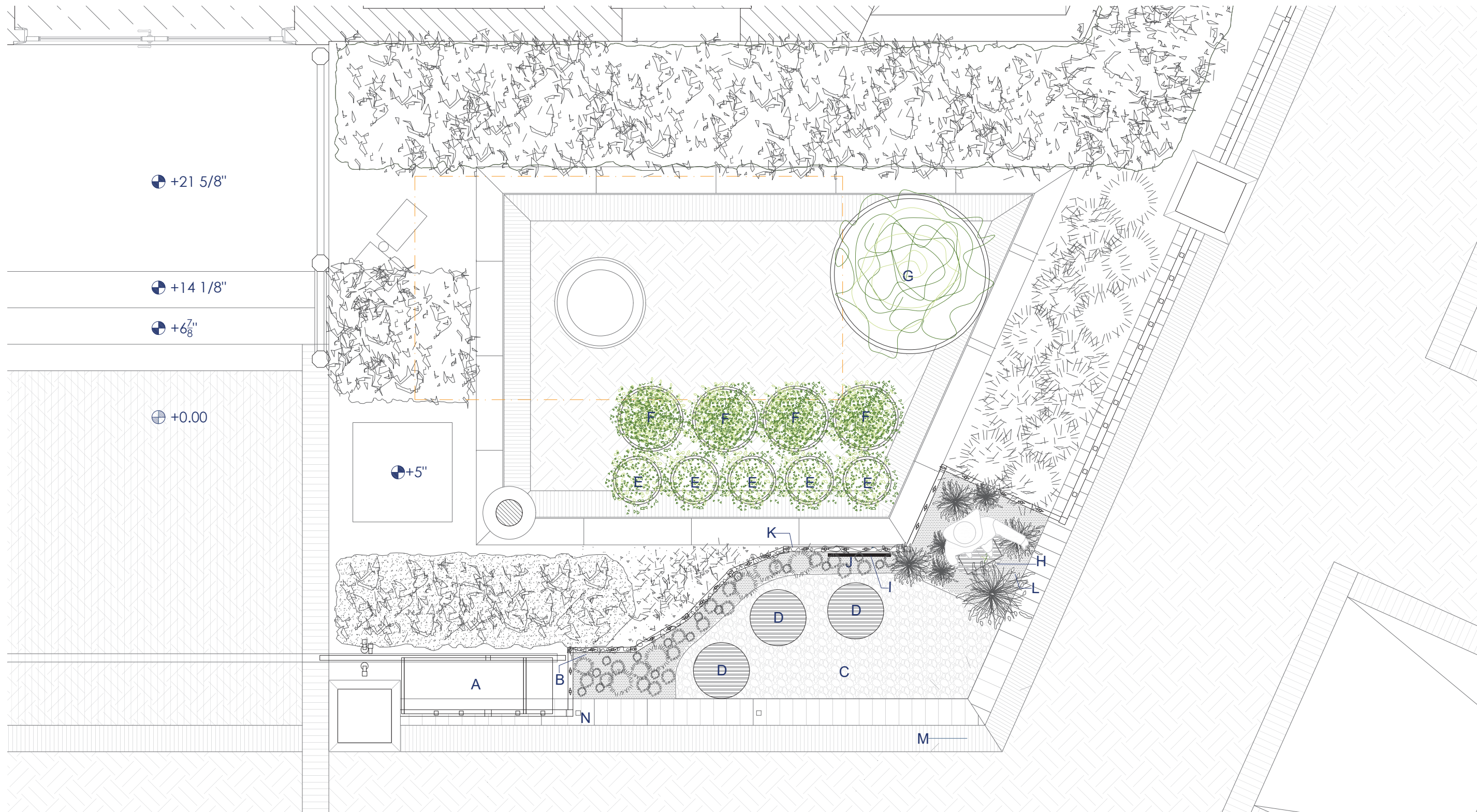
Commemorative Garden 2375 Pennsylvania Ave. NW

WORKING DRAWINGS OCTOBER 2022

P.01.02 DEMOLITION PLAN SCALE: 1/30 DIN A3
DEMOLITION PLAN

OWNER:
SPAIN-USA FONDATION
2801 16TH STREET NW, WASHINGTON DC
TEODORO SACRISTÁN LLORENTE - 202 728 2352
emb.washington@maec.es; teodoro.sacristan@maec.es

ARCHITECT:
ADAM BRESNICK HECHT 12136 COAM
C/ SERRANO ANGUITA Nº7 28004 MADRID
NIF: 06031187N



PLANTERS

G

- BRAND: WAUSAU TILE
- TF4120 FORM ROUND
- CONCRETE PLANTER
- DIAMETER: 48" dia.
- HEIGHT: 30"
- WEIGHT: 1325 lbs.
- MATERIAL: CONCRETE
- ACID WASH: A38 NIGHT
- WEBSITE: <https://wausautile.com/Products/Form-Round-Concrete-Planter-TF4120.cfm>

F

- BRAND: AMERICAN PLANT
- CAMPANIA INTERNATIONAL
- CANTAGAL PLANTER
- LARGE : 21"W x 15.5"H, WEIGHT: 61 lbs., BASE: 10.5" Diam.
- WEBSITE: <https://americanplant.store/cantagal-planter-volcanic-coral/>

E

- BRAND: AMERICAN PLANT
- CANTAGAL PLANTER - VOLCANIC CORAL
- CAMPANIA INTERNATIONAL
- MEDIUM : 14.5"W x 11.5"H, WEIGHT: 25 lbs., BASE: 8.5" Diam.
- WEBSITE: <https://americanplant.store/cantagal-planter-volcanic-coral/>

LEGEND

- | | |
|---|--|
| A. Standardized informational Sign (height to be adapted) | H. Statue with new poured in place concrete base |
| B. New fencing | I. Existing memorial plaque attached to fence |
| C. New Paving - Exposed aggregate concrete / portuguese cobblestone | J. Planted ivy or vining plant TBD |
| D. Poured in place concrete benches | K. Ground cover TBD |
| E. New planters and plant species | L. Bulbs, tall grasses, perennials TBD |
| F. New planters and plant species | M. Patch with new brick where missing or damaged |
| G. New planter with ground cover | |

"Bernardo de Gálvez"

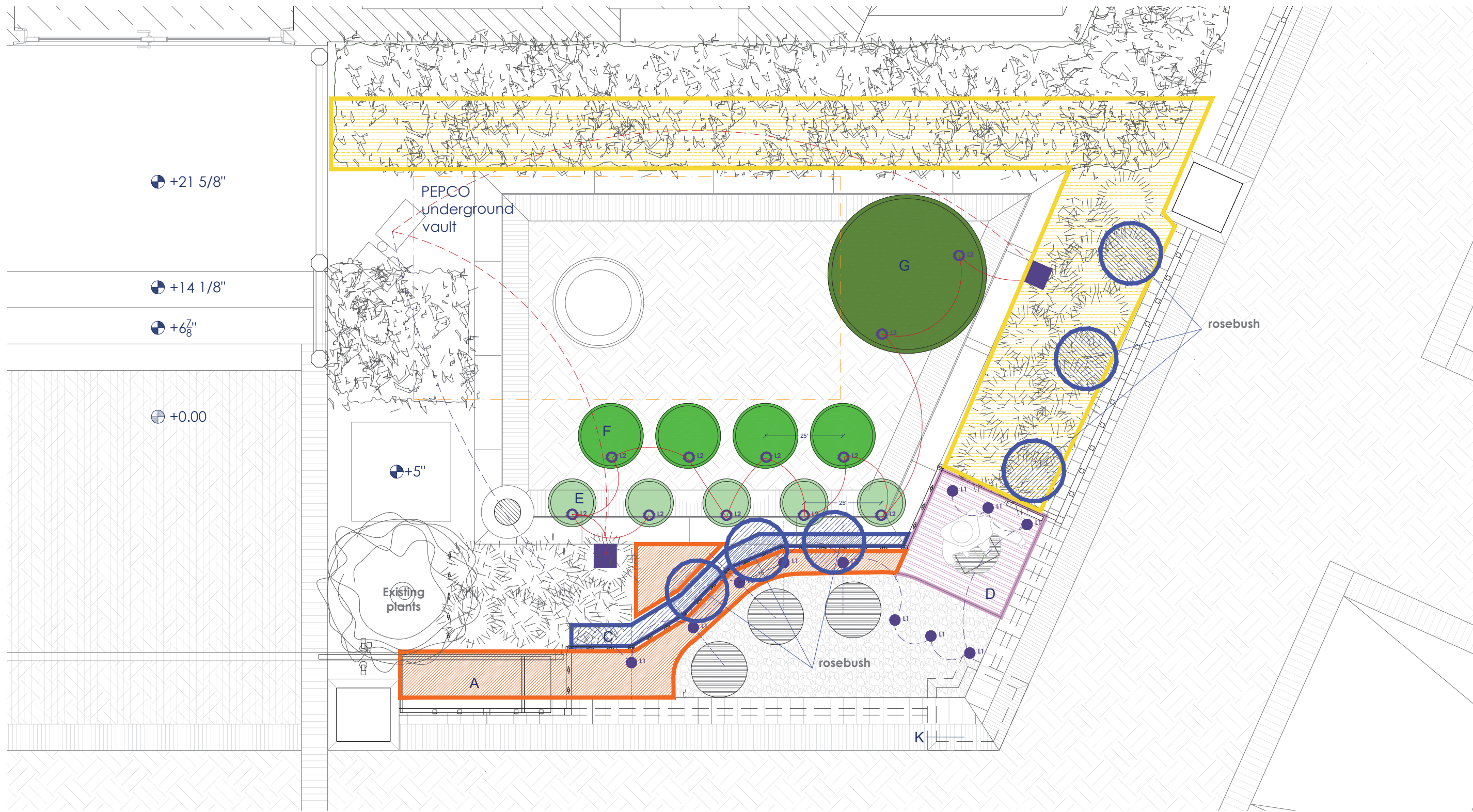
Commemorative Garden 2375 Pennsylvania Ave. NW

WORKING DRAWINGS OCTOBER 2022

P.01.03 PROPOSAL PLAN SCALE: 1/30 DIN A3 DISTRIBUTION PLAN

OWNER:
 SPAIN-USA FOUNDATION
 2801 16TH STREET NW, WASHINGTON DC
 TEODORO SACRISTÁN LLORENTE - 202 728 2352
 emb.washington@maec.es; teodoro.sacristan@maec.es

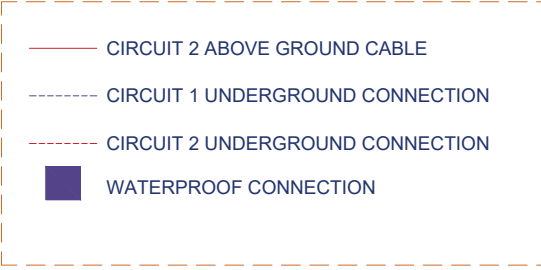
ARCHITECT:
 ADAM BRESNICK HECHT 12136 COAM
 C/ SERRANO ANGUIA Nº7 28004 MADRID
 NIF: 06031187N



LIGHTINGS SCHEDULE

	SYM.	LYD.	BRAND	MODEL	Ø (o L.)	FINISH	BEAM ANGLE	POWER	COLOR TEMP.	Ud. (aprox)
	L1	L1	ALCON LIGHTING	9026 - CB	4 7/8"	CAST BRASS	25°	5 W	2700 K	11
	L2	L2	ALCON LIGHTING	9018 PADOVA	2 1/4"	BLACK	38°	2.5 W	2700 K	11

LIGHTING



VEGETATION - PLANTINGS

	TYPE A: Asarum canadense, 6 units/m2 + Allium 'Mount Everest' 9 units		TYPE E: Pennisetum villosum or Pennisetum alopecuroides
	TYPE B: We maintain existing vegetation to give continuity		TYPE F: Cornus stolonifera "Flaviramea"
	TYPE C: Rosa banksiae Rosea, 6 uts		TYPE G: Prunus cerasifera serrulata + Liriope muscari "Monroe White"
	TYPE D: Muhlenbergia capillaris, 8 units		

"Bernardo de Gálvez"

Commemorative Garden 2375 Pennsylvania Ave. NW

WORKING DRAWINGS OCTOBER 2022

P.01.04 PLANTING + LIGHTING PLAN SCALE: 1/30 DIN A3

PLANTING+LIGHTING

OWNER:
 SPAIN-USA FONDATION
 2801 16TH STREET NW, WASHINGTON DC
 TEODORO SACRISTÁN LLORENTE - 202 728 2352
 emb.washington@maec.es; teodoro.sacristan@maec.es

ARCHITECT:
 ADAM BRESNICK HECHT 12136 COAM
 C/ SERRANO ANGUIA Nº7 28004 MADRID
 NIF: 06031187N